

reaming  
**SOLUTIONS**

[www.alliedmachine.com](http://www.alliedmachine.com)

**S.C.A.M.I. ALVAN<sup>®</sup> REAMERS**



Hold *tight tolerances*  
with expanding  
solutions



Achieve *excellent*  
surface finish



*Increase*  
penetration rates



*Lower cost*  
per hole



**ALLIED MACHINE  
& ENGINEERING**



**YOUR COMPANY  
LOGO GOES HERE**



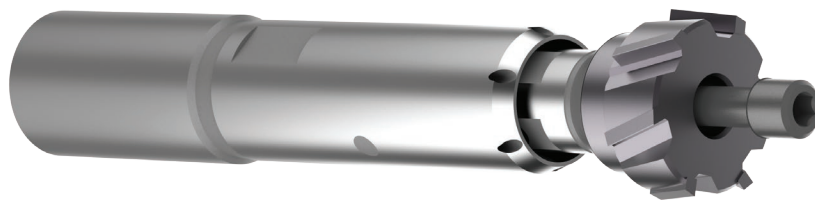
## 7000 SERIES

0.4646" - 3.1732" (11.80 mm - 80.60 mm)

- ▶ Features both expandable and fixed diameter heads.
- ▶ Multiple diameters within the same arbor reduce inventory requirements.
- ▶ Coolant configurations for blind and through hole applications.
- ▶ Available with brazed carbide, cermet, or PCD cutting edges.
- ▶ Reamer head reconditions are available upon request.

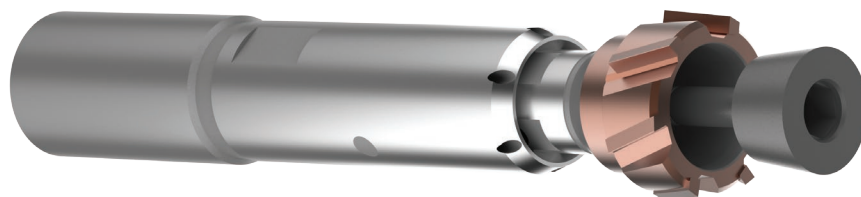


### fixed head reamers



- ▶ H7 tolerance capability.
- ▶ Nonexpanding diameter for simple on-machine replacement.

### expandable head reamers



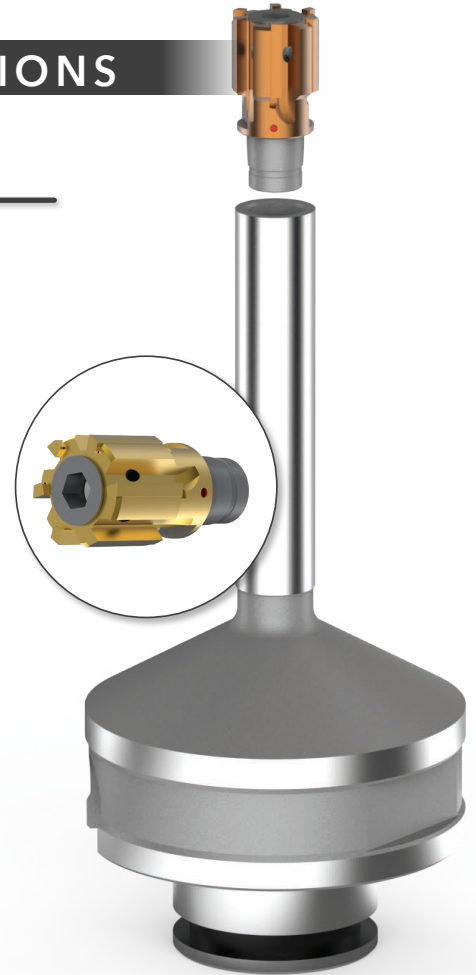
- ▶  $\pm 0.0002$ " (0.005 mm) tolerance capability.
- ▶ Expandable option to hold tighter tolerances and accommodate for wear.

## HIGH PERFORMANCE REAMING SOLUTIONS

### 5000 SERIES

0.3780" - 1.2835" (9.60 mm - 32.60 mm)

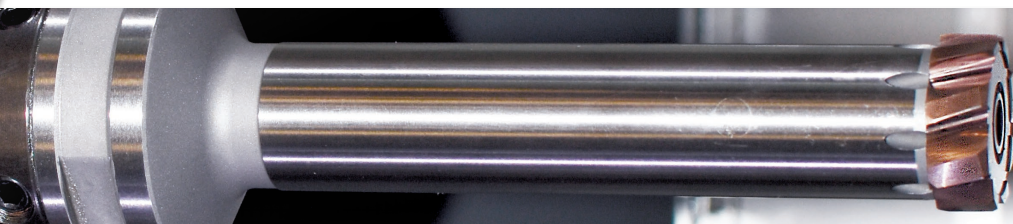
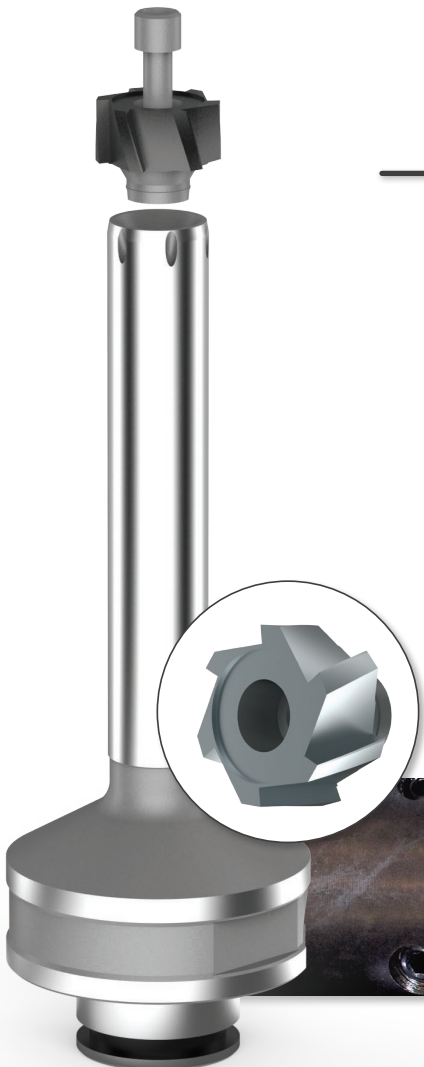
- ▶ Features expandable diameter heads.
- ▶ Heads arrive set to finish diameter and specified tolerance.
- ▶ Twist-lock heads for precision locating of the head to the mandrel.
- ▶ Best TIR repeatability from head to head providing consistent tool wear and maximized tool life.
- ▶ Available with brazed carbide or cermet cutting edges.



### 9000 SERIES

0.4646" - 1.5984" (11.80 mm - 40.60 mm)

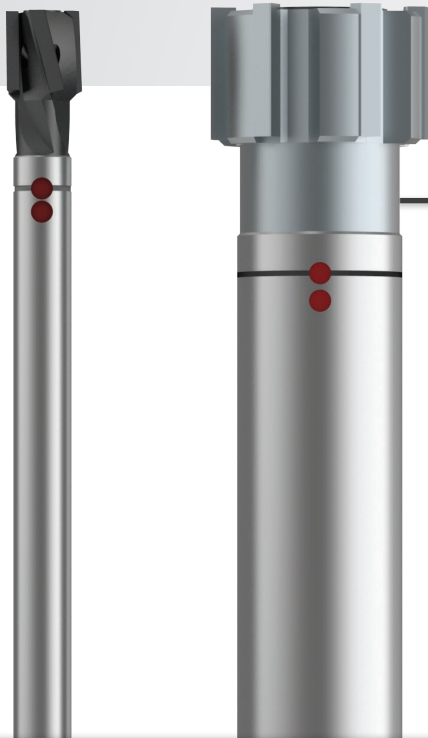
- ▶ Features fixed diameter heads.
- ▶ Heads are precision ground to finish diameter.
- ▶ Quick-change heads require minimal downtime for replacement.
- ▶ Sintered carbide or cermet design provides improved rigidity in difficult applications.
- ▶ H7 tolerance capability.



## CUTTING RING STYLE

0.6929" - 7.8976" (17.60 mm - 200.60 mm)

- ▶ Ideal for diameters over 1.9685" (50.00 mm).
- ▶ Diameter expansion provides tight tolerance capabilities and wear accommodation.
- ▶ Provides radial adjustment to improve runout.
- ▶ Asymmetrically positioned cutting edges to assure the best roundness of the hole.
- ▶ Available with brazed carbide, cermet, or PCD cutting edges.
- ▶ Reconditions are available upon request.



## MONOBLOC STYLE

0.2283" - 1.2638" (5.80 mm - 32.10 mm)

- ▶ Ideal for diameters under 0.5906" (15.00 mm).
- ▶ Diameter expansion provides tight tolerance capabilities and wear accommodation.
- ▶ One-piece design for reduced initial tooling cost.
- ▶ Arrives set to diameter.
- ▶ Reconditions are available upon request for diameters greater than 0.3780" (9.60 mm).
- ▶ Available with brazed carbide, cermet, or PCD cutting edges.



Allied Machine & Engineering is pleased to offer ALVAN® Reamers through an exclusive supply agreement with S.C.A.M.I. s.n.c., an Italian manufacturer that provides high-quality cutting tools.



123 Example St.  
Town, ST 123456  
www.yourcompany.com  
(123) 456-7890

**CONTACT YOUR LOCAL ALLIED FIELD SALES ENGINEERS (FSES)  
FOR ASSISTANCE WITH ANY APPLICATION.**

**ALLIED FSE 1** | (012) 345-6789 • aexample@alliedmachine.com  
**ALLIED FSE 2** | (098) 765-4321 • bexample@alliedmachine.com

Allied Machine offers expert engineering support. Whether you need a quote, a test, or an application solution, a highly skilled and trained engineer is standing by, ready to help.  
[www.alliedmachine.com/contactus](http://www.alliedmachine.com/contactus)

Copyright © 2026 Allied Machine and Engineering Corp. – All rights reserved.  
All trademarks designated with the ® symbol are registered in the United States and other countries.



Holemaking Solutions for Today's Manufacturing