

holemaking & finishing **SOLUTIONS**

www.alliedmachine.com



DRILLING



BORING



REAMING



BURNISHING



THREADING



SPECIALS



**ALLIED MACHINE
& ENGINEERING**



**YOUR COMPANY
LOGO GOES HERE**

REPLACEABLE INSERT DRILLS

Replaceable insert drills reduce costs and decrease setup and downtime with efficient tool changeover by replacing inserts rather than entire tools.



T-A Pro®

Ø: 0.3739" - 1.8820" (9.50 mm - 47.80 mm)
Depth: Drill & Chamfer, Stub, 3xD, 5xD, 7xD, 10xD, 12xD, 15xD



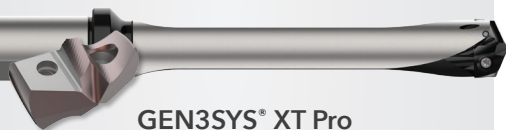
GEN2 T-A®

Ø: 0.3739" - 4.5070" (9.50 mm - 114.48 mm)
Depth: 1xD - 28xD



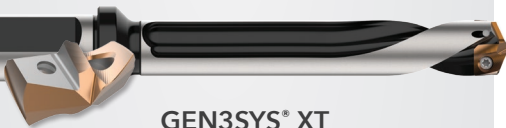
T-A®

Ø: 0.3739" - 4.5070" (9.50 mm - 114.48 mm)
Depth: 1xD - 28xD



GEN3SYS® XT Pro

Ø: 0.4331" - 1.3780" (11.00 mm - 35.00 mm)
Depth: 3xD, 5xD, 7xD, 10xD, 12xD



GEN3SYS® XT

Ø: 0.4331" - 1.3780" (11.00 mm - 35.00 mm)
Depth: Drill & Chamfer, Stub, 3xD, 5xD, 7xD

STRUCTURAL STEEL



T-A® & GEN2 T-A®

Ø: 0.5512" - 1.8829" (14.00 mm - 47.82 mm)
Depth: Short, Standard, Extended, Long



GEN3SYS® XT Pro

Ø: 0.4724" - 1.3780" (12.00 mm - 35.00 mm)
Depth: 1.5xD, 3xD, 5xD, 7xD

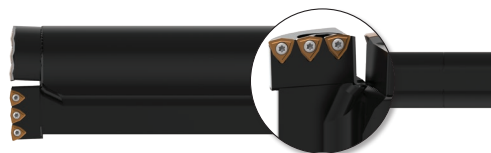
INDEXABLE CARBIDE INSERT DRILLS

Improve production time and increase tool life by simply rotating indexable carbide (IC) inserts when one edge begins to wear.



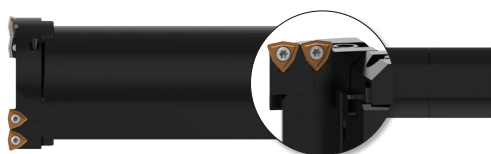
4TEX® Drill

Ø: 0.472" - 1.850" (12.00 mm - 47.00 mm)
Depth: 2xD, 3xD, 4xD



Revolution Drill®

Ø: 1.875" - 4.000" (47.63 mm - 101.60 mm)
Depth: 1xD, 2.2xD, 2.5xD, 3.5xD, 4.5xD
Shanks: Straight, CAT40, CAT50



Opening Drill®

Ø: 2.000" - 5.620" (50.80 mm - 142.75 mm)
Depth: Short, Long
Shanks: Straight, CAT40, CAT50, BT40, BT50, HSK63, HSK100, ABS63, DIN50



APX™ Drill

Ø: 1.299" - 4.000" (33.00 mm - 101.60 mm)
Depth: 3xD, 5xD, 8xD, 10xD
Shanks: Straight, CAT40, CAT50

SOLID CARBIDE



Superior® Solid Carbide

Superior offers tight tolerances, multiple steps, highly desirable penetration rates, and application-specific solutions.



Superior® PCD

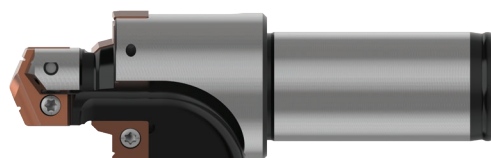
PCD cutting edge hardness extends tool life 10-fold over carbide tooling making it ideal for CFRP and other challenging materials.

INDUSTRY SOLUTIONS



BT-A Drill

Ø: 0.5110" - 1.8829" (12.98 mm - 47.82 mm)
Utilized specifically on BTA (STS) machine equipment.



AccuPort 432®

Port size: 4 to 32
Save significant time and money by performing four operations in one step.

WOHLHAUPTER® BORING SOLUTIONS

TOOLS FOR FINE BORING

Wohlhaupter's fine boring systems are offered in both vernier and easy-to-read digital readout boring heads and cassettes. The lightweight Alu-Line tool bodies reduce weight on the machine spindle.



249 (248)

Ø: 0.118" - 1.189"
(3.00 mm - 30.20 mm)



PrimeBore

Ø: 0.118" - 8.189"
(3.00 mm - 208.00 mm)



VarioBore

Ø: 0.016" - 5.984"
(0.40 mm - 152.00 mm)



511 (510)

Ø: 0.016" - 1.339"
(0.40 mm - 12.00 mm)



DigiBore

Ø: 0.118" - 8.189"
(3.00 mm - 208.00 mm)



538 (537)

Ø: 3.937" - 128.150"
(100.00 mm - 3255.00 mm)



320 (310)

Ø: 0.787" - 8.071"
(20.00 mm - 205.00 mm)



365 (364)

Ø: 0.787" - 1.161"
(20.00 mm - 29.50 mm)



420 (410)

Ø: 0.787" - 1.142"
(20.00 mm - 29.00 mm)



465 (464)

Ø: 1.142" - 8.071"
(29.00 mm - 205.00 mm)



565 (564)

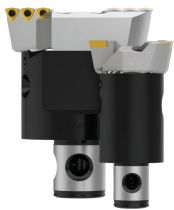
Ø: 1.969" - 8.071"
(50.00 mm - 205.00 mm)



ES-Bore

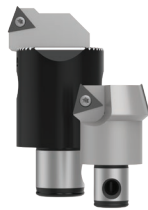
Ø: ≥1.102"
(≥28.00 mm)

ROUGH MACHINING



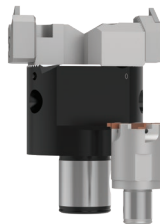
Twin Cutters

Ø: 0.768" - 128.150"
(19.50 mm - 3255.00 mm)
Premachine holes with short processing times and excellent chip control.



Chamfering

Ø: 0.748" - 127.874"
(19.00 mm - 3248.00 mm)
Chamfer holes from 15°, 20°, 30°, and 45° approach angles and various diameters.



Grooving

Axial Ø: 0.787" - 128.150"
(20.00 mm - 3255.00 mm)
Radial Ø: 0.787" - 3.110"
(20.00 mm - 79.00 mm)
Create grooves with radial and axial grooving replaceable insert rough machining tools.



Reverse Machining

Ø: 1.141" - 131.102"
(29.00 mm - 3330.00 mm)
Complete back boring applications with reverse machining insert holders.

ROUGH & FINISH MACHINING



Combi-Line

Ø: 0.965" - 7.913"
(24.50 mm - 201.00 mm)

LARGE DIAMETER



Basic D40 Slides

Ø: 7.874" - 20.472"
(200.00 mm - 520.00 mm)



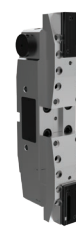
Basic D60 Slides

Ø: 7.874" - 19.881"
(200.00 mm - 505.00 mm)



Eco Slides

Ø: 18.307" - 40.157"
(465.00 mm - 1020.00 mm)



Flex Slides

Ø: 19.685" - 128.150"
(500.00 mm - 3255.00 mm)



Cartridge Options

Rough & Finish | Chamfering
Back Boring | Axial Grooving



CRITERION[®] MODULAR BORING



- Criterion modular boring systems bring speed, tolerance, toughness, and versatility to your boring applications.
- Offers versatile boring heads suitable for production facilities, job shops, and tool rooms.
- Flexible modular system provides an economical solution for low-volume and/or short-term production applications so they can be applied in the future.
- Criterion modular boring systems are available with analog adjustment.

THREADING

Achieve precise thread forms with a large variety of thread mills through the AccuThread[®] and ThreadMills USA[®] product lines.



ThreadMills USA Solid Carbide



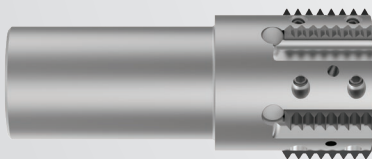
AccuThread 856 Solid Carbide



AccuThread T3 Solid Carbide



AccuThread 856 Bolt-In



AccuThread 856 Pin Style

REAMING

In addition to producing close tolerances, these ALVAN[®] reamers by S.C.A.M.I. provide lower costs per hole making them the ideal choice for finishing holes.



5000 Series - Replaceable Head

Ø: 0.3780" - 1.2835" (9.600 mm - 32.600 mm)



7000 Series - Replaceable Head

Ø: 0.4646" - 2.3862" (11.800 mm - 60.609 mm)



9000 Series - Replaceable Head

Ø: 0.4646" - 1.5984" (11.800 mm - 40.600 mm)



Monobloc Style

Ø: 0.2283" - 1.2638" (5.800 mm - 32.100 mm)



Cutting Ring Style

Ø: 1.2835" - 7.8976" (32.600 mm - 200.600 mm)

BURNISHING

With S.C.A.M.I.[®] roller burnishers, you can eliminate the need for slower and more costly finishing processes and secondary operations such as grinding, honing, and lapping.



Blind Hole Style

Ø: 0.2319" - 6.5315" (5.89 mm - 165.90 mm)



Through Hole Style

Ø: 0.1555" - 6.5315" (3.95 mm - 165.90 mm)



**YOUR COMPANY
LOGO GOES HERE**

123 Example St., Town, ST 123456
(123) 456-7890 | www.yourcompany.com

**CONTACT YOUR LOCAL ALLIED FIELD SALES
ENGINEERS (FSES) FOR ASSISTANCE WITH
ANY APPLICATION.**

ALLIED FSE 1 | (012) 345-6789 • aexample@alliedmachine.com

ALLIED FSE 2 | (098) 765-4321 • bexample@alliedmachine.com



SPECIAL TOOLING SOLUTIONS

Our engineers see applications in ways many others don't, and that ability allows us to win situations that haven't been won before. If you have a particularly unique or difficult application, give us a call. Most of our standard tooling can be customized as specials, and we can create entirely new concepts if alterations to standard product won't do the trick.

Allied Machine offers expert engineering support. Whether you need a quote, a test, or an application solution, a highly skilled and trained engineer is standing by, ready to help.
www.alliedmachine.com/contactus

Copyright © 2026 Allied Machine and Engineering Corp. – All rights reserved.
All trademarks designated with the ® symbol are registered in the United States and other countries.



WOHLHAUPTER[®]

Holemaking Solutions for Today's Manufacturing