

reaming **SOLUTIONS**

www.alliedmachine.com

S.C.A.M.I. ALVAN[®] REAMERS



Hold ***tight tolerances***
with expanding
solutions



Achieve ***excellent***
surface finish



Increase
penetration rates



Lower cost
per hole



**ALLIED MACHINE
& ENGINEERING**

www.alliedmachine.com

Allied Machine offers a wide range of drilling,
boring, reaming, burnishing, and threading
tools to lower your **cost per hole**.



7000 SERIES

0.4646" - 3.1732" (11.80 mm - 80.60 mm)

- ▶ Features both expandable and fixed diameter heads.
- ▶ Multiple diameters within the same arbor reduce inventory requirements.
- ▶ Coolant configurations for blind and through hole applications.
- ▶ Available with brazed carbide, cermet, or PCD cutting edges.
- ▶ Reamer head reconditions are available upon request.



fixed head reamers



- ▶ H7 tolerance capability.
- ▶ Nonexpanding diameter for simple on-machine replacement.

expandable head reamers



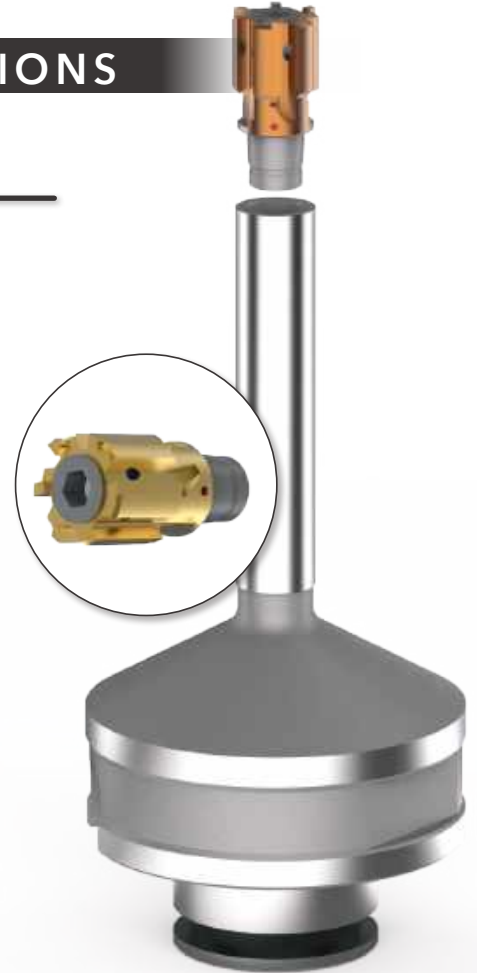
- ▶ ± 0.0002 " (0.005 mm) tolerance capability.
- ▶ Expands up to 1% on diameter to accommodate for wear.

HIGH PERFORMANCE REAMING SOLUTIONS

5000 SERIES

0.3780" - 1.2835" (9.60 mm - 32.60 mm)

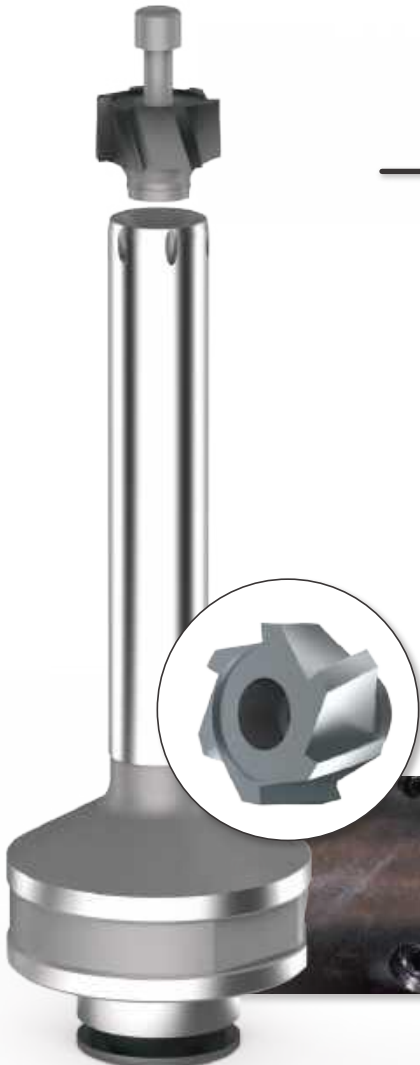
- ▶ Features expandable diameter heads.
- ▶ Heads arrive set to finish diameter and specified tolerance.
- ▶ Twist-lock heads for precision locating of the head to the mandrel.
- ▶ Best TIR repeatability from head to head providing consistent tool wear and maximized tool life.
- ▶ Available with brazed carbide or cermet cutting edges.



9000 SERIES

0.4646" - 1.5984" (11.80 mm - 40.60 mm)

- ▶ Features fixed diameter heads.
- ▶ Heads are precision ground to finish diameter.
- ▶ Quick-change heads require minimal downtime for replacement.
- ▶ Sintered carbide or cermet design provides improved rigidity in difficult applications.
- ▶ H7 tolerance capability.



CUTTING RING STYLE

0.6929" - 7.8976" (17.60 mm - 200.60 mm)

- ▶ Ideal for diameters over 1.9685" (50.00 mm).
- ▶ Expands up to 4% on diameter.
- ▶ Provides radial adjustment to improve runout.
- ▶ Asymmetrically positioned cutting edges to assure the best roundness of the hole.
- ▶ Available with brazed carbide, cermet, or PCD cutting edges.
- ▶ Reconditions are available upon request.



MONOBLOC STYLE

0.2283" - 1.2638" (5.80 mm - 32.10 mm)

- ▶ Ideal for diameters under 0.5906" (15.00 mm).
- ▶ Expands up to 1% on diameter.
- ▶ Arrives set to diameter.
- ▶ One-piece design for reduced initial tooling cost.
- ▶ Reconditions are available upon request for diameters greater than 0.3780" (9.60 mm).
- ▶ Available with brazed carbide, cermet, or PCD cutting edges.



S.C.A.M.I.®

ALVAN®

Allied Machine & Engineering is pleased to offer ALVAN® Reamers through an exclusive supply agreement with S.C.A.M.I. s.n.c., an Italian manufacturer that provides high-quality cutting tools.

Allied Machine offers expert engineering support. Whether you need a quote, a test, or an application solution, a highly skilled and trained engineer is standing by, ready to help.
www.alliedmachine.com/contactus

Copyright © 2024 Allied Machine and Engineering Corp. – All rights reserved.
All trademarks designated with the ® symbol are registered in the United States and other countries.

 **ALLIED MACHINE
& ENGINEERING**
WOHLHAUPTER®
Holmaking Solutions for Today's Manufacturing